



Marina Coast Water District:

A California Special District

STATE OF THE DISTRICT

DIRECTORS

Dr. THOMAS P. MOORE

President

JAN SHRINER

Vice President

HOWARD GUSTAFSON

WILLIAM Y. LEE

PETER LE

Interim General Manager

Mr. Brian C. Lee

Marina Coast Water District

- A County Water District
- Formed in 1960 to buy out a private water company
- Serves Marina, the Ord Community, and a portion of Armstrong Ranch with
 - Potable water service
 - Wastewater collection service
 - Water conservation services

MCWD Governance

- Unpaid, five person, elected board of directors
- Four year staggered terms (elections every two years)
- Elected by registered voters within the District's boundaries (not service areas)

MCWD Boundaries and Service Areas



County Water District Powers

- Provide potable water
- Provide wastewater collection
- Provide wastewater treatment
- Provide recycled water
- Operate parks (latent power)

County Water District Revenue Sources

- **Fees and rates** (which must be related to the cost of the service provided), such as:
 - Water rates and sewage collection fees
 - Meter charges
 - Capacity charges
 - Service fees (inspections, plan checks, etc.)
- **State and Federal Grants**
- **Can establish tax assessments, usually to pay off a bond which is used to pay for capital improvements**

MCWD Statistics

Feature	Total	Central Marina	Ord Community
Population (2011)	34,258	19,695	14,563
Employees	34 FTE	---	---
Connections	8,224	3,890	4,334
2011-2012 Revenue	\$14.2 million	---	---
2011-2012 Expenses	\$15.7 million	---	---
2011-2012 Capital Improvements	\$5 million	---	---
Net Assets, June 30, 2012	\$132.5 million	---	---
Debt as of June 30, 2012	\$46.7 million	---	---

MCWD Statistics, con't.

Feature	Total	Central Marina	Ord Community
Operating Wells	8	3	5
Storage Tanks	8 (11.2 MG)	1	7
Lift Stations	19	4	15
Water Pipe	223 miles	50.4 miles	172.6 miles
Sewer Collection Pipe	154.6 miles	41.1 miles	113.5 miles
Booster Stations	6	1	5
Emergency Generators	17 (1 port.)	1	15
Hypochlorite Generators	4	3	1
Pressure Reducing Valve Stations	19	1	18

Recent Capital Improvement Project Expenditures

Including equipment replacement, Armstrong Ranch Property Acquisition and MCWD's share of Imjin Office Park

Year	Central Marina	Ord Community	Desal Project
2012	\$567,738	\$4,334,961	\$2,453,288
2011	\$1,200,921	\$4,223,810	\$8,219,661
2010	\$3,208,140	\$6,940,702	\$3,949,629
2009	\$577,535	\$6,895,397	\$2,150,372
2008	\$1,037,705	\$5,306,326	\$1,595,929

MCWD Accomplishments

- First Water Conservation Commission in Monterey County
- Very strong ongoing conservation program.
- First publically owned desalination plant on the Central Coast (300 AFY capacity)
- First publically owned reclaimed water plant in Monterey County (300+ AFY capacity)
- Won the right to serve Ord Community

MCWD Accomplishments, con't.

- Fiscally sound
- Excellent bond rating
- Several recent CAFR* awards from the Government Finance Officers Association

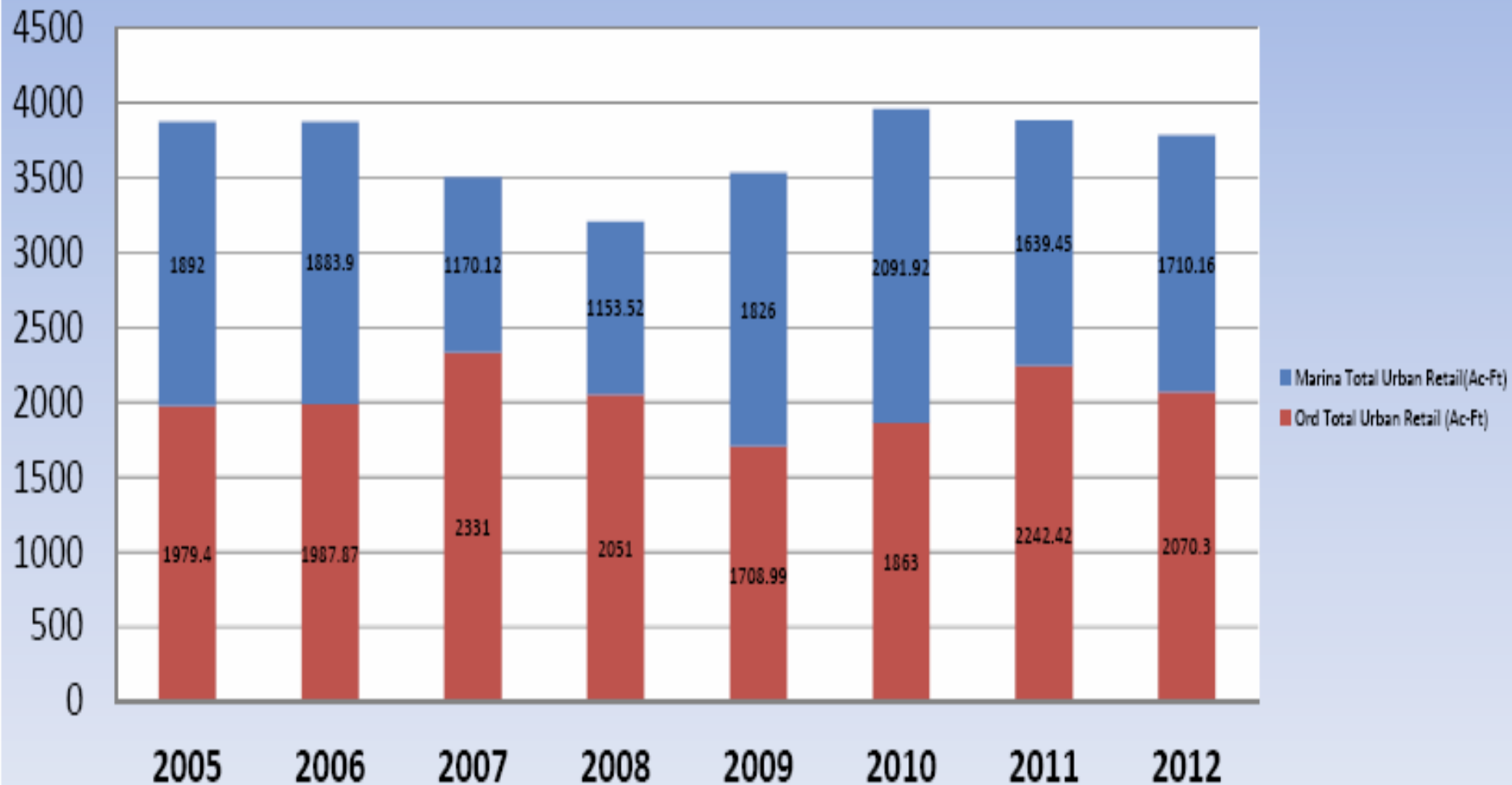
* Comprehensive Annual Financial Report

Interests and Responsibilities of Marina Coast Water District

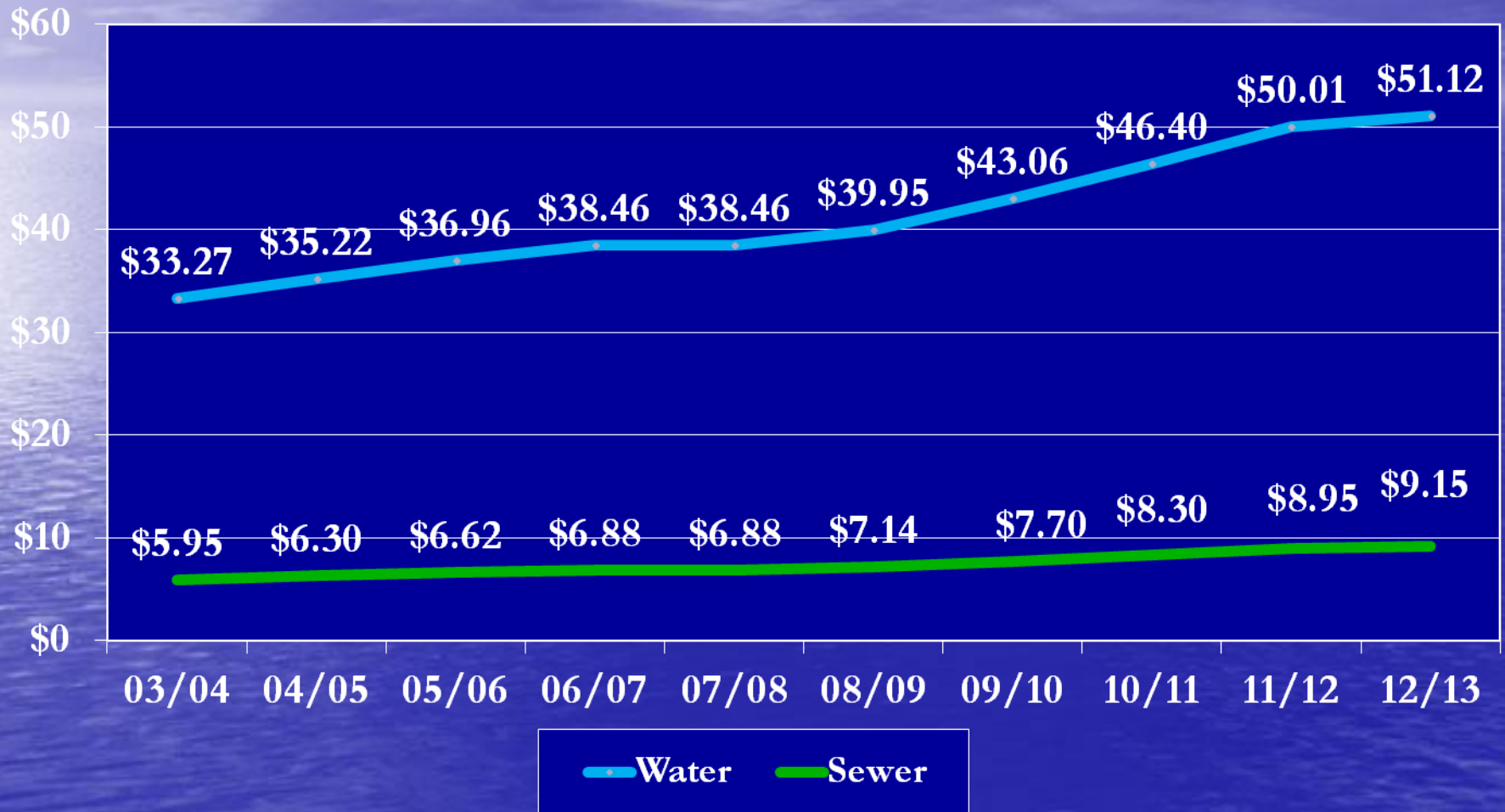
- Provide safe potable water to customers in Central Marina and the Ord Community
- Protect its water supplies
- Provide environmentally sound, sanitary sewer collection service
- Ensure the fiscal health of the District
- Where possible, cooperate with adjoining districts and agencies

MCWD Total Distribution

(Central Marina+Ord Community)

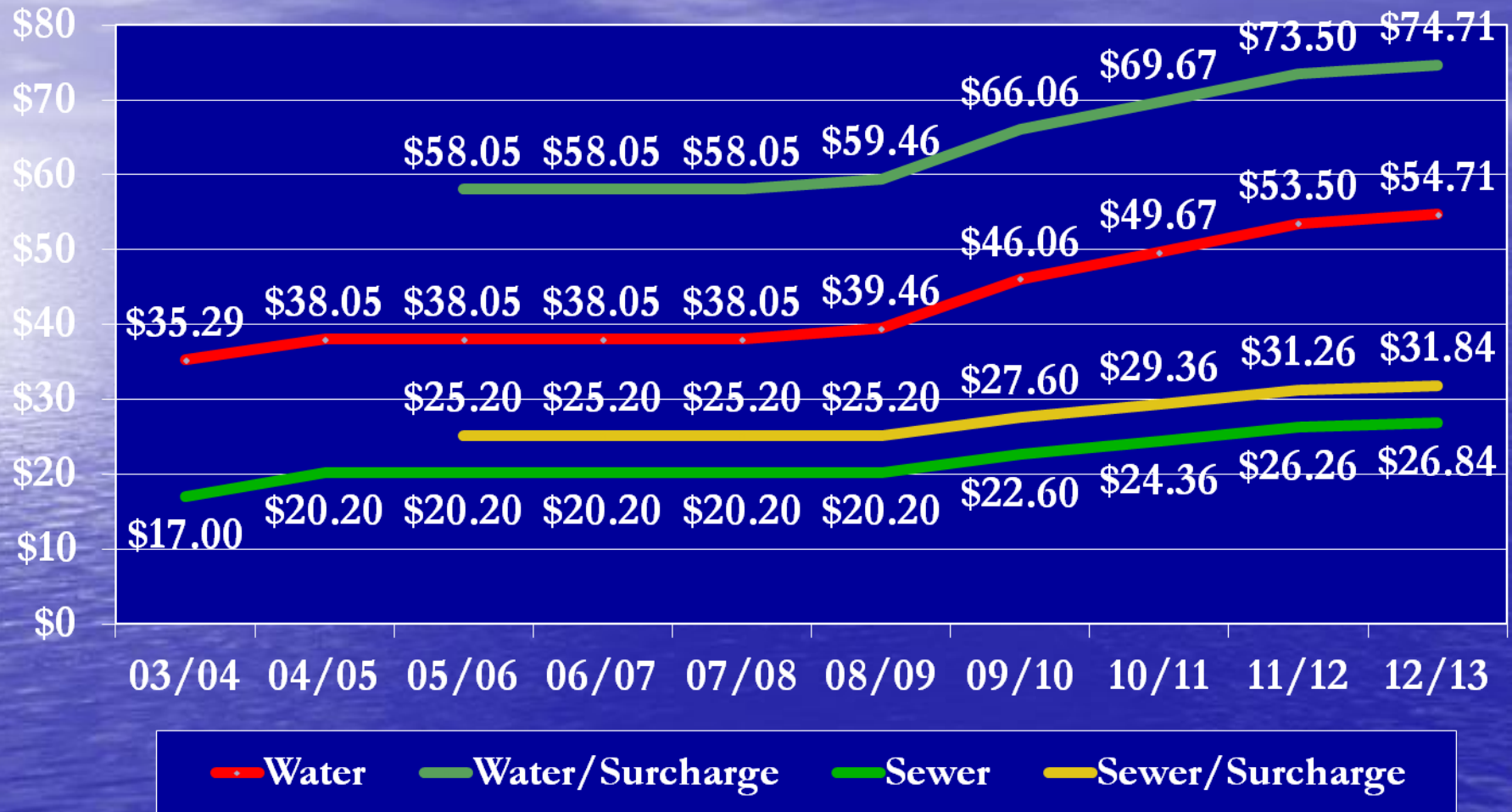


Marina Rates – Past Ten Years



Monthly rates are based on a dwelling unit using 13 HCF per month.

Ord Rates – Past Ten Years



Monthly rates are based on a dwelling unit using 13 HCF per month.

Major Current Challenges

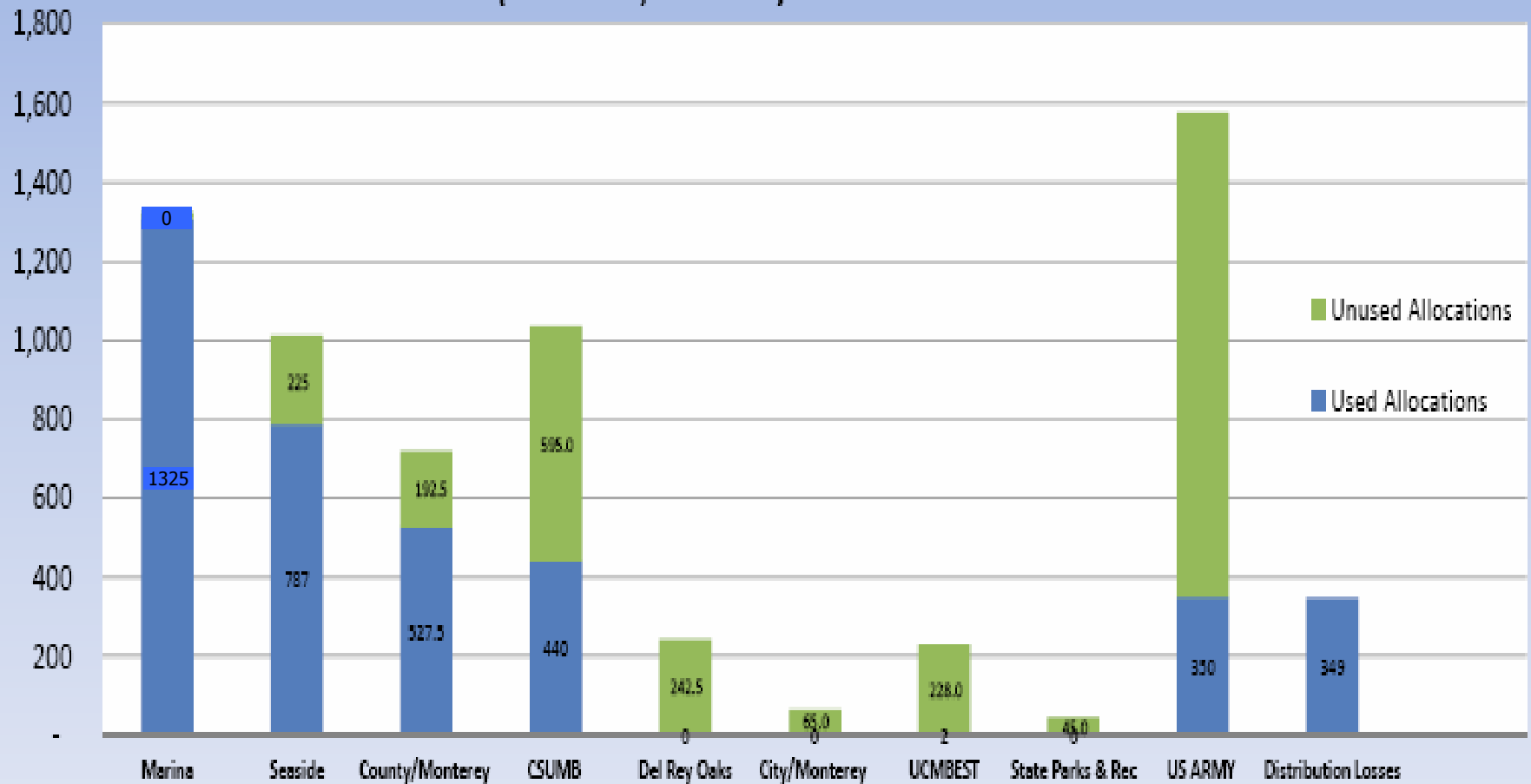
- Seawater Intrusion in the SVGB
- We have just one major water source: the Salinas Valley Groundwater Basin (SVGB)
 - Limited to 10,540 AFY
- The scheduled sunset of FORA in 2020
- Growth projections for the Ord Community
 - the 1997 Fort Ord reuse plan calls for 2,700 AFY more water than is available from the SVGB
- **Recovery of \$14-\$18 million from failed Regional Desalination Project**

Major Current Challenges, con't.

- Identify and pursue a redundant source of potable water -- the choices are limited:
 - Capture and treat some sort of surface water
 - Desalinate seawater
 - Reclaim water from sewage
- Replacement or rehabilitation of aged pipelines and other infrastructure

Fort Ord's Allocations

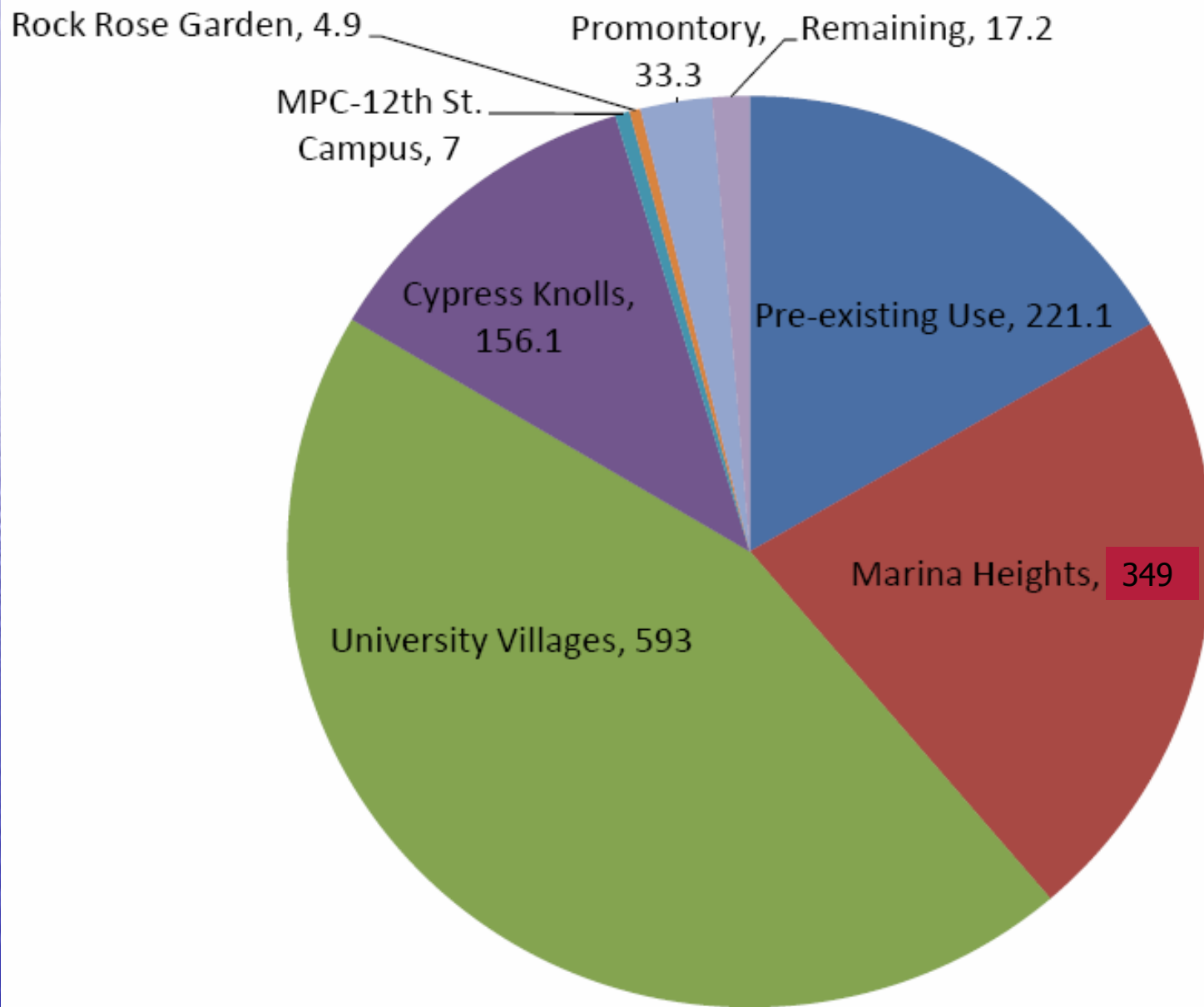
(Total of 6,600 ac-ft)



City of Marina Sub-allocations

Total allocations=1325 AF

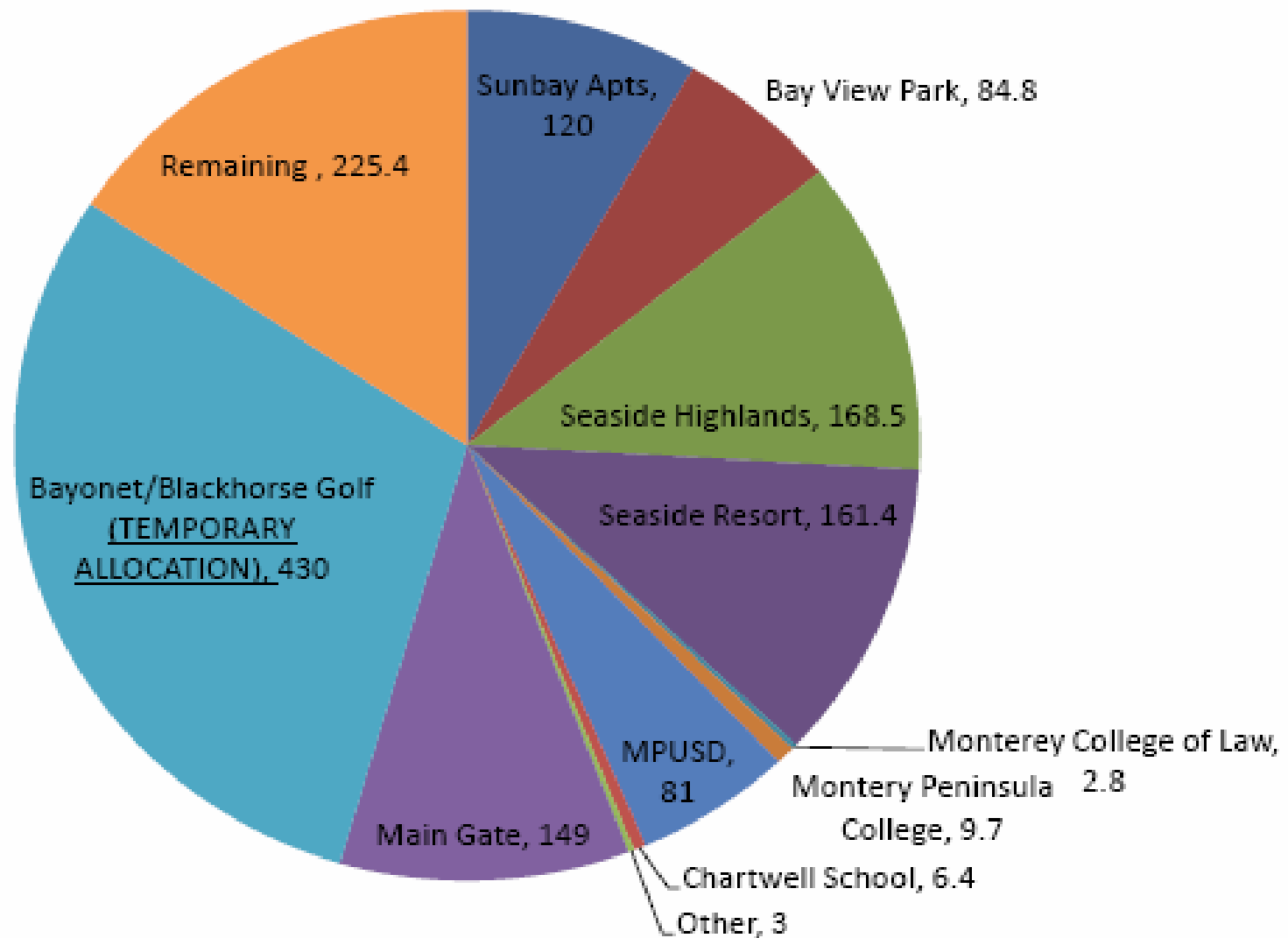
Remaining allocations =17.2 AF



City of Seaside Sub-allocations

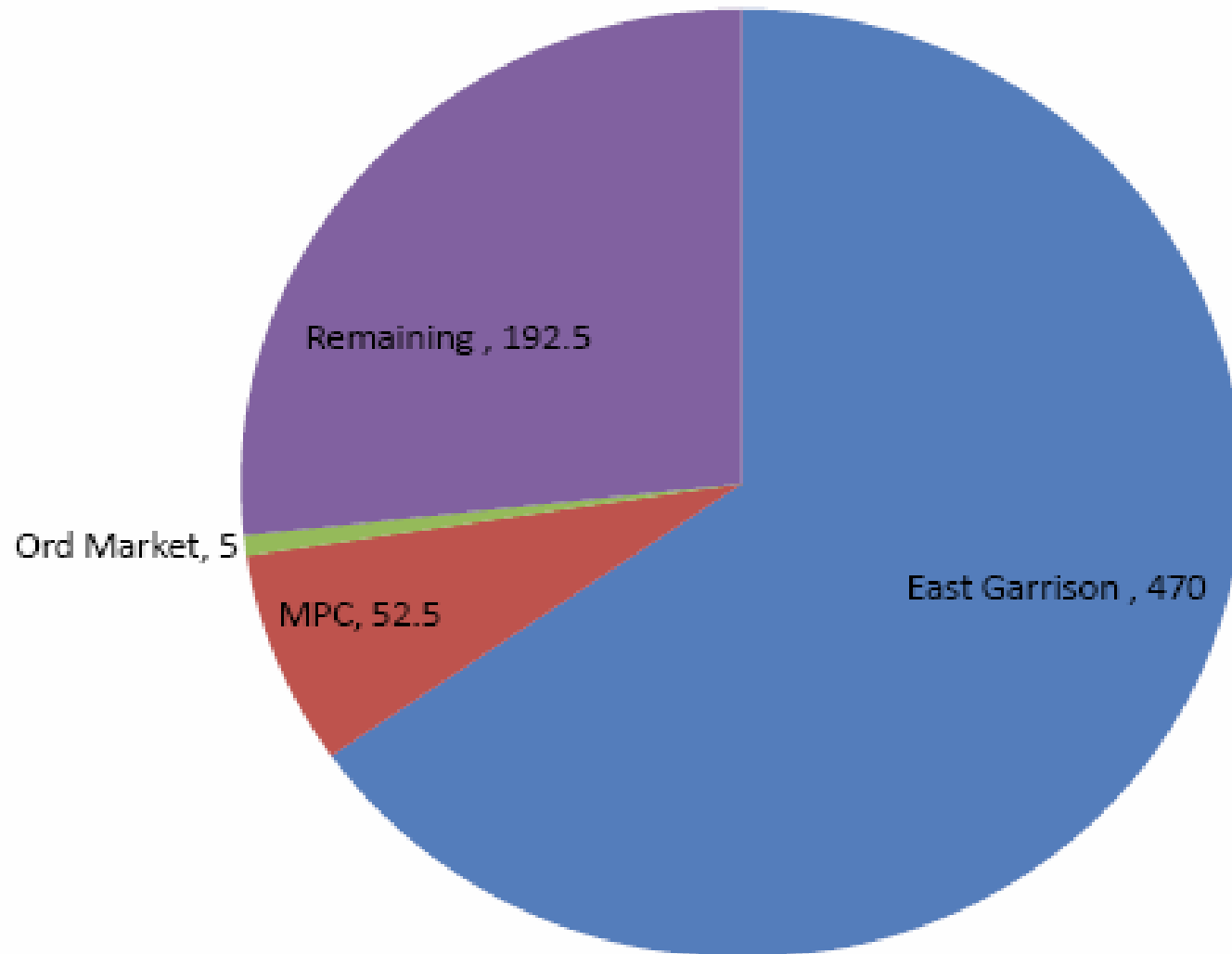
Total allocations=1012 AF

Remaining allocations=225 AF



County of Monterey Sub-Allocations

Total allocations = 720 AF
Remaining allocations=192.5 AF



Ord Community Allocation is FORA's Responsibility

- Marina and Seaside face a demand versus allocation challenge.
- Possible solutions:
 - Loans from one land use jurisdiction to another?
 - Invest in more reduction of line losses?
 - Reduction of the sub allocation to select projects?
 - ???

The Source of Our Water:



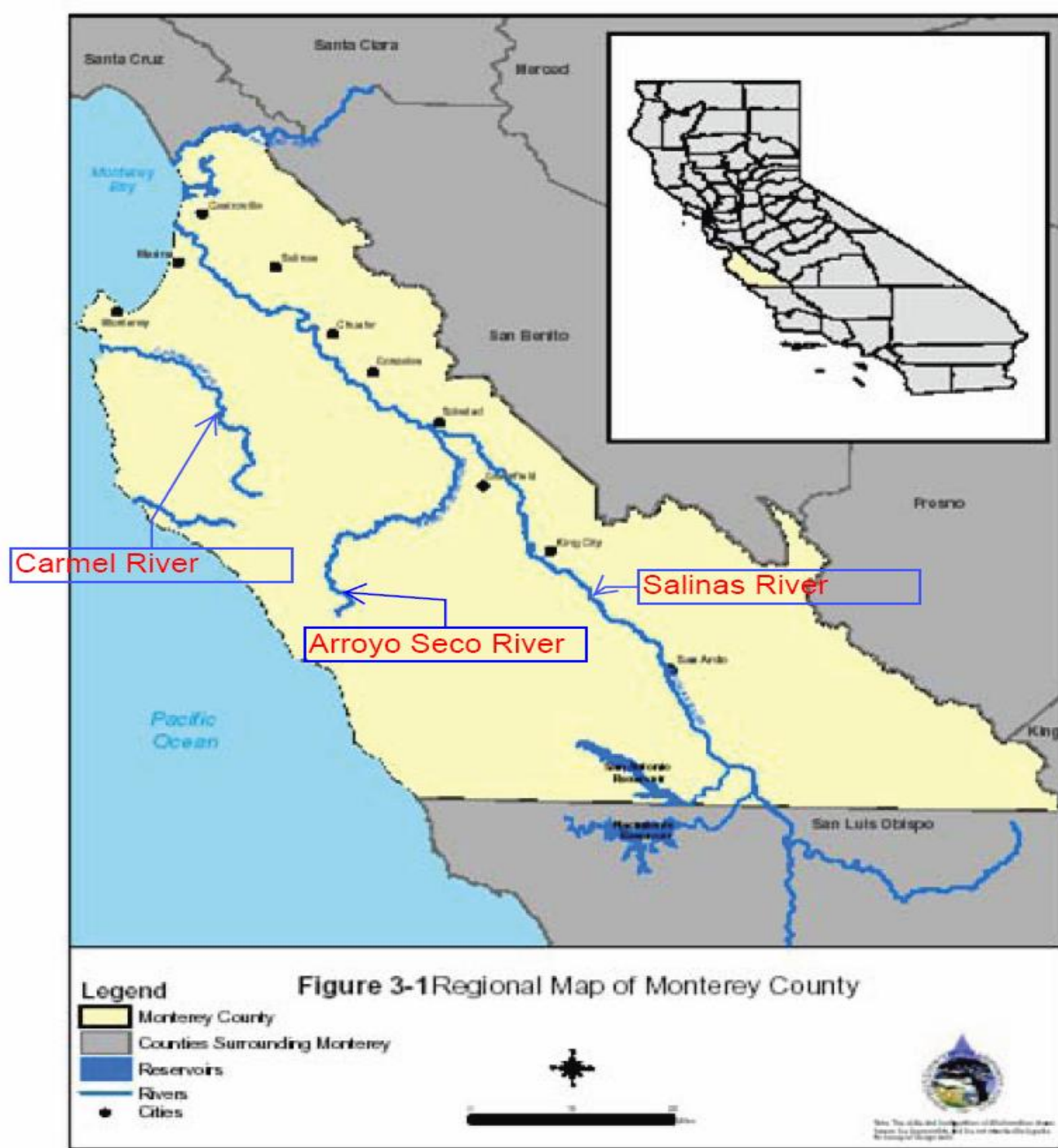


Figure 116. The Salinas Valley is the largest of California's coastal basins.

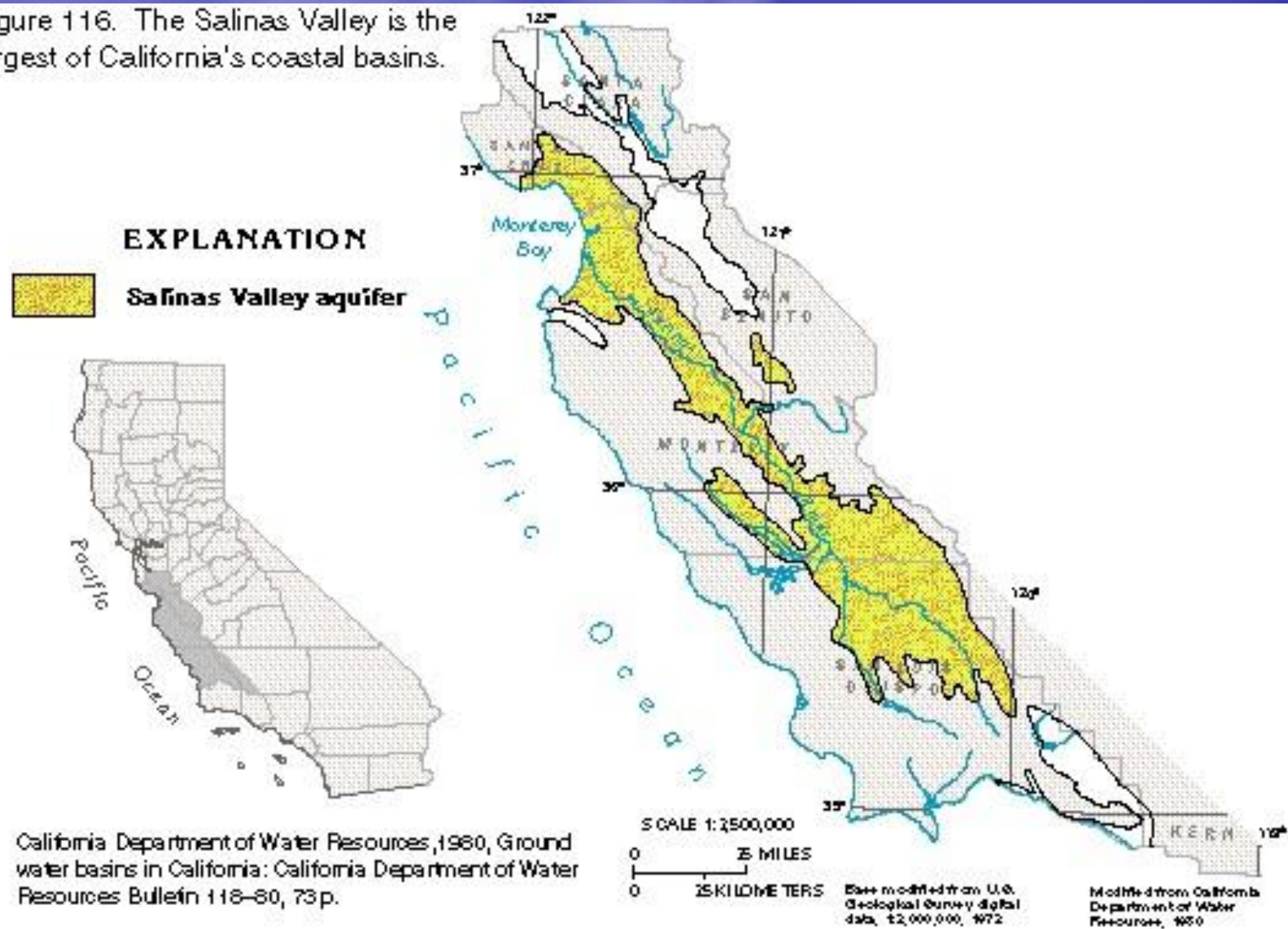
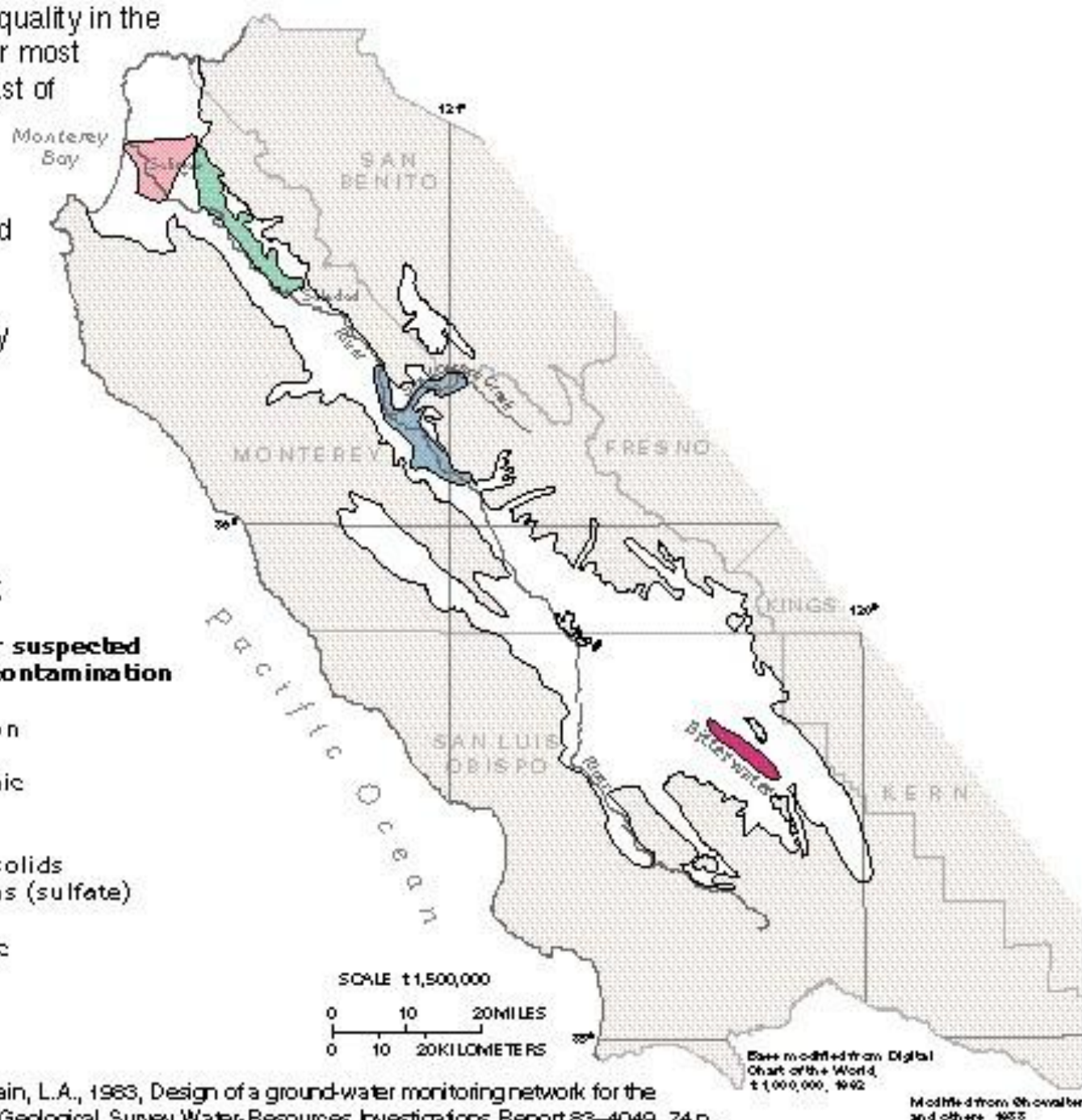
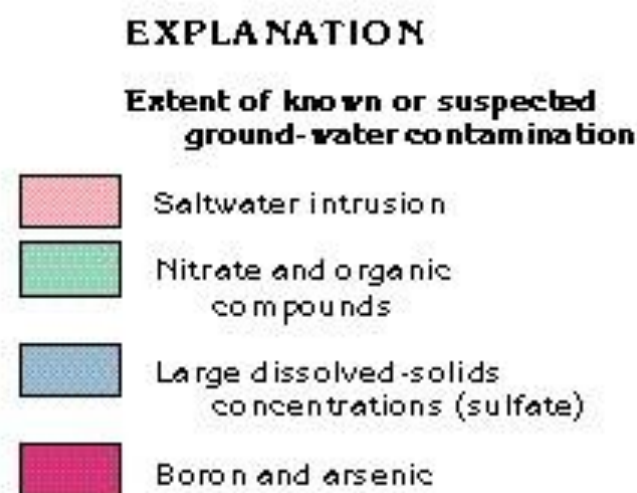
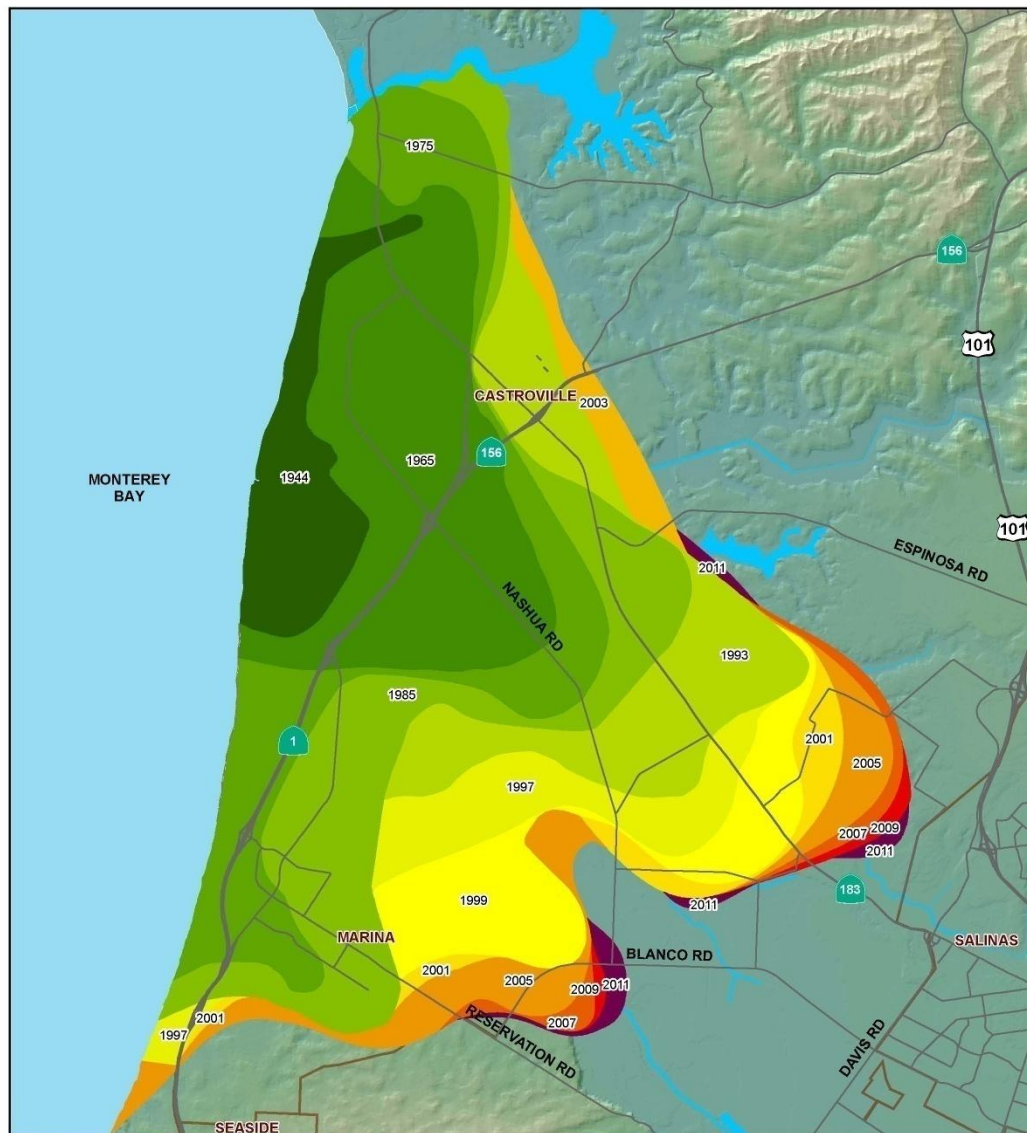


Figure 122. Ground-water quality in the Salinas Valley is suitable for most purposes except locally. East of the Salinas River in the northern part of the valley, industrial contamination limits ground-water use, and large-scale withdrawals have resulted in seawater intrusion. Contamination by sulfate in the San Lorenzo Creek and Salinas River area and by boron and arsenic in the Bitterwater area is natural.



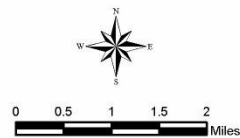


Historic Seawater Intrusion Map Pressure 180-Foot Aquifer - 500 mg/L Chloride Areas

Legend

Seawater Intruded Areas By Year

1944	1997	2007
1965	1999	2009
1975	2001	2011
1985	2003	
1993	2005	
		Cities



Note: The scale and configuration of all information shown herein are approximate and are not intended as a guide for survey or design work. Contour lines are drawn from best available data.

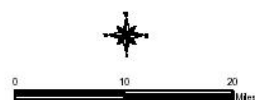
Map Date: August 6, 2012



Legend

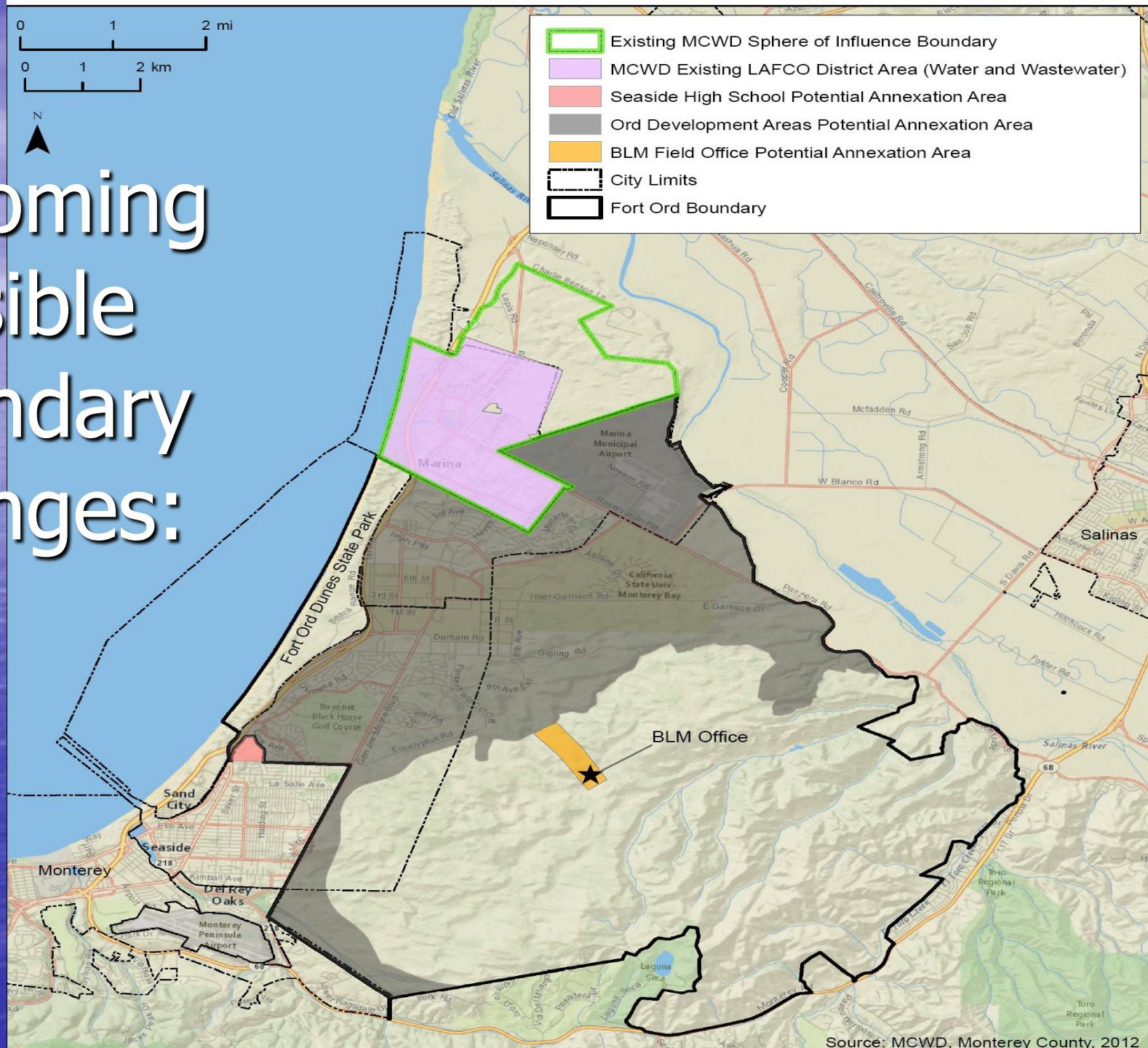
- Cities
- Castroville Water District
- Marina Coast Water District
- Salinas Valley
- Monterey County Water Resources Agency (MCWRA)
- Rivers

Figure ES-1 Monterey County Water District Jurisdictions



Note: The scale and content of all information shown herein are approximate and are not intended as a guide for survey or design work.

Upcoming Possible Boundary Changes:



Potential Ord Community Annexation

- MCWD serves Ord Community via a contract with FORA
- Ord Community residents are not in the District and therefore may not vote for Directors; Ord Community residents are represented through FORA
- FORA sunsets in 2020
- LAFCO will determine what happens then on the Ord Community

Potential Ord Community Annexation, con't.

- Should MCWD annex the Ord Community into the District?
- But then how will the separate cost centers concept be guaranteed to continue?

Carmel Creek Near Los Padres Dam



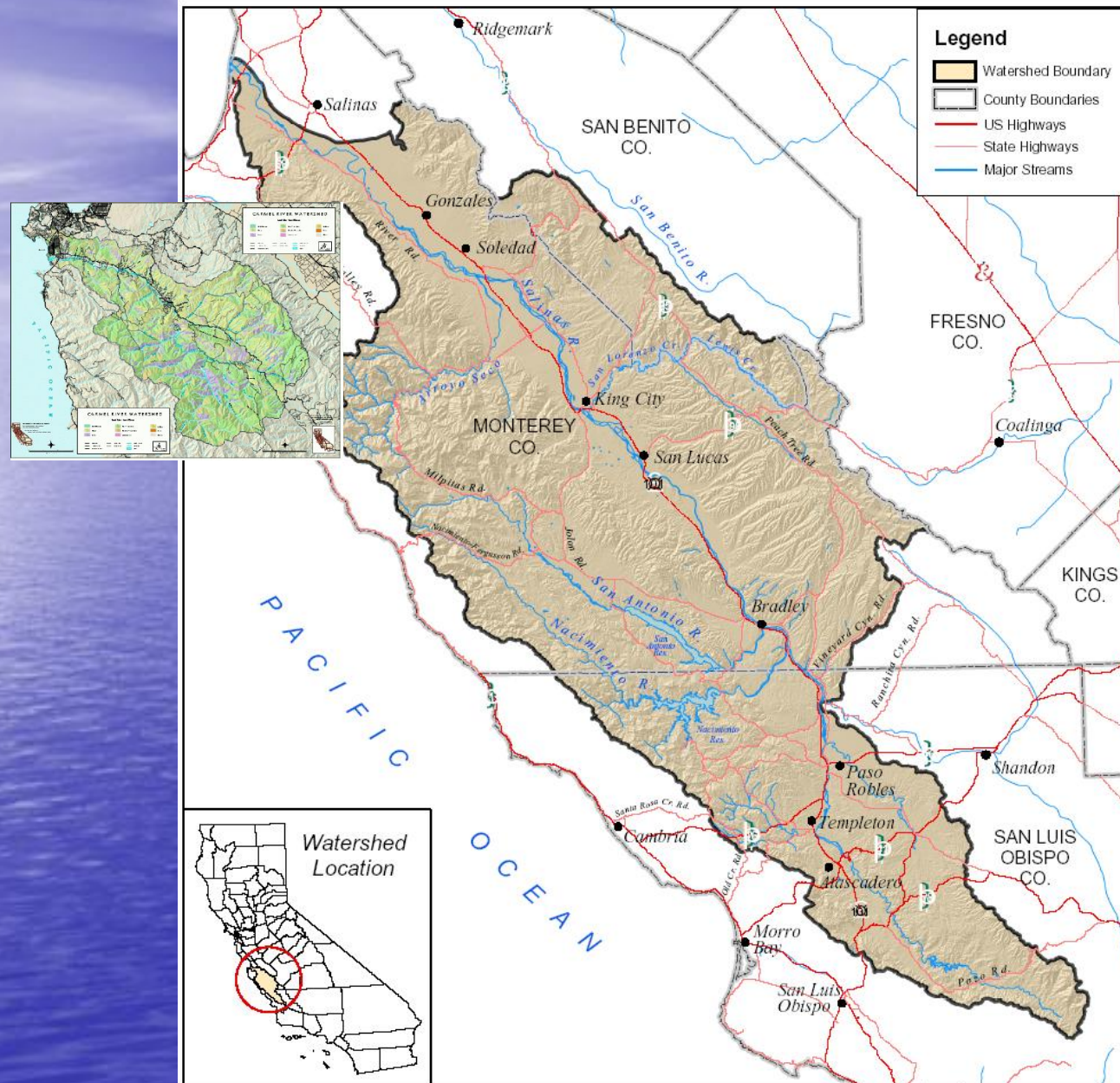
Wicked Water Problem - Unfilled Demand to the South

- Cal-Am service area served almost entirely by Carmel Creek

Wicked Water Problem - Unfilled Demand to the South

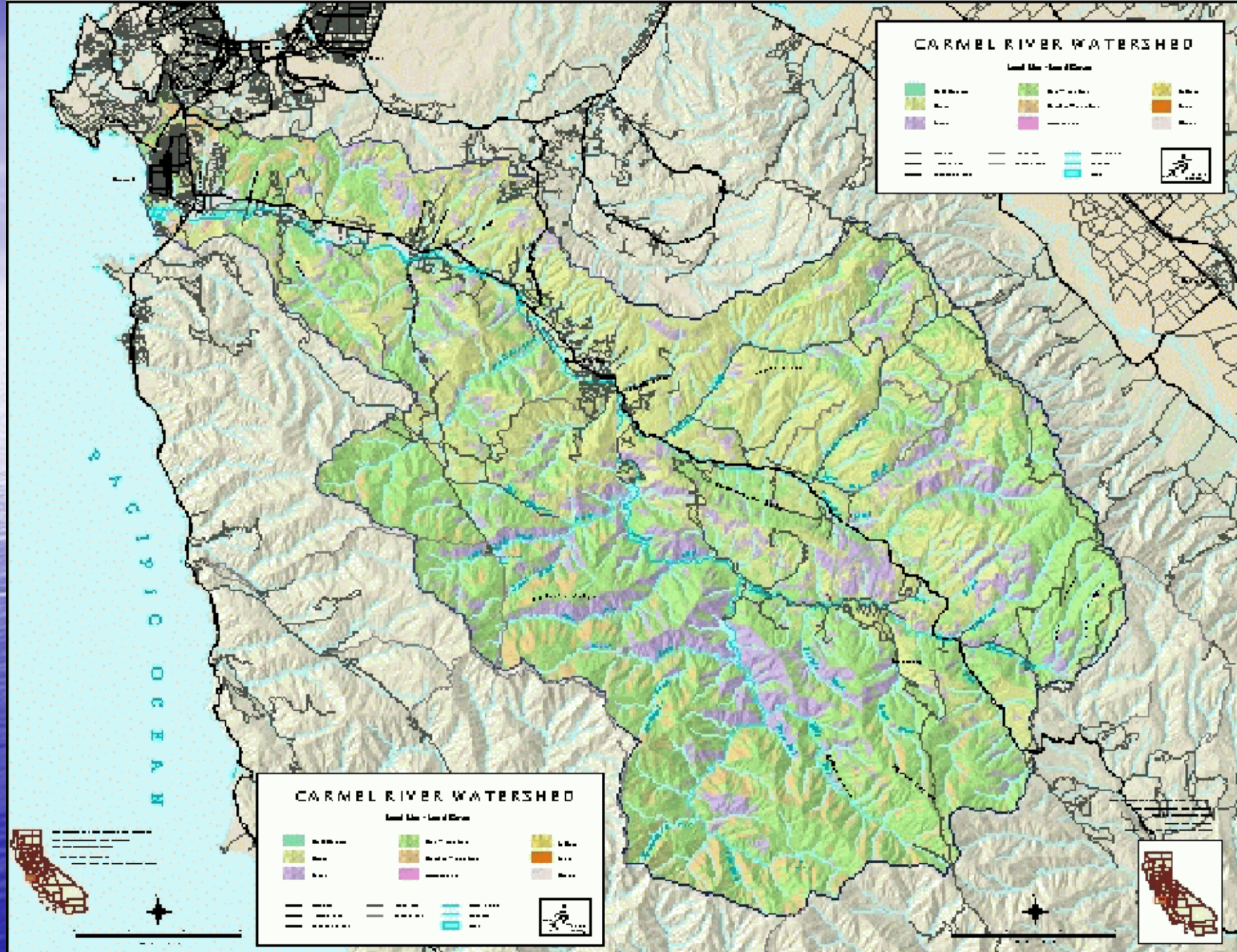
- Cal-Am service area served almost entirely by Carmel **River**
- Cal-Am service area - 6 competing cities and significant acreage in unincorporated areas
- **Collectively they have been unable to live within their water means**
- SWRCB Order 9510 – equivalent to 40,000 single family homes

Salinas Watershed - 18060005

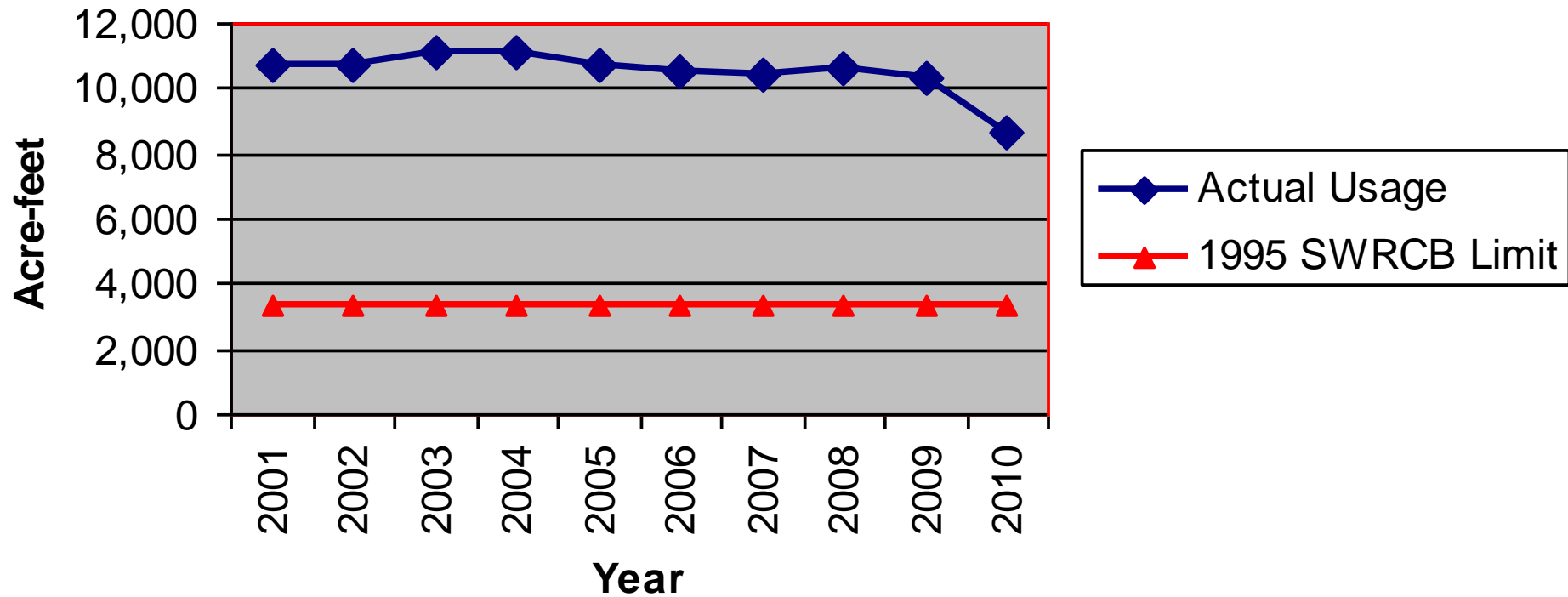


Map prepared by GIS Services Team
California NRCS State Office, Davis, CA
March 2008





Cal Am Withdrawals from Carmel River



Questions?